

INDIVIDUAL SPECIFICATION SHEET

Product Name:汽车插片式保险丝

Part Number: AB10xxx Series 平脚

Revision: A



Dongguan TLC Electronic Technology Co., LTD

No.18,5th GaoLi Road,TangXia Town,DongGuan,GuangDong,P.R China 523710

TEL: 86-0769-3892 0511

FAX: 86-0769-8793 2077

Http: www.tlcet.com.cn

Rev.	Effective Date	Changed Contents
A	2020-7-30	New release

The individual specification sheet are the property of Dongguan TLC electronic technology Co.,Ltd and shall not be copied or used as commercial purposes without permission.

PREPARED BY

杨娟

APPROVED BY

李国平

DESCRIPTION

PLUG-IN FUSES

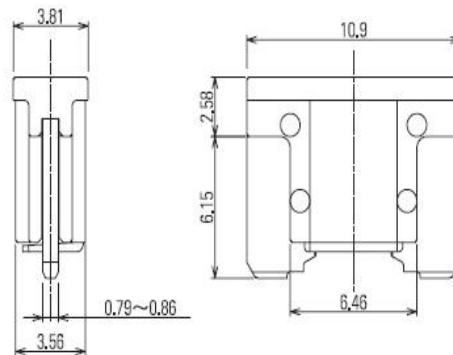
No.AB10xxx

1. **Scope-** The fuses shown are for in motor vehicles, boats and trailers to protect electrical wiring and equipment. This standard is for the construction shown and is not intended to restrict the design and use of other configurations and materials capable of meeting the vehicle requirements.
2. **Definition-** A fuse is a device designed to interrupt the electrical circuit when subjected to overcurrents. This action is to be nonreversible and the fuse is intended to be replaced after the circuit, malfunction has been corrected.

3. **Ampere: RATING AND FUSE COLOR CODE-TABLE**

Material number	Ampere rating	Color	Volt
AB10002	2	Grey	58 V
AB10003	3	Violet	
AB10004	4	Pink	
AB10005	5	Tan	
AB10075	7.5	Brown	
AB10010	10	Red	
AB10015	15	Blue	
AB10020	20	Yellow	
AB10025	25	Clear	
AB10300	30	Green	

4. Size-TABLE



5. Material-Materials of the fuse are in accordance with TABLE

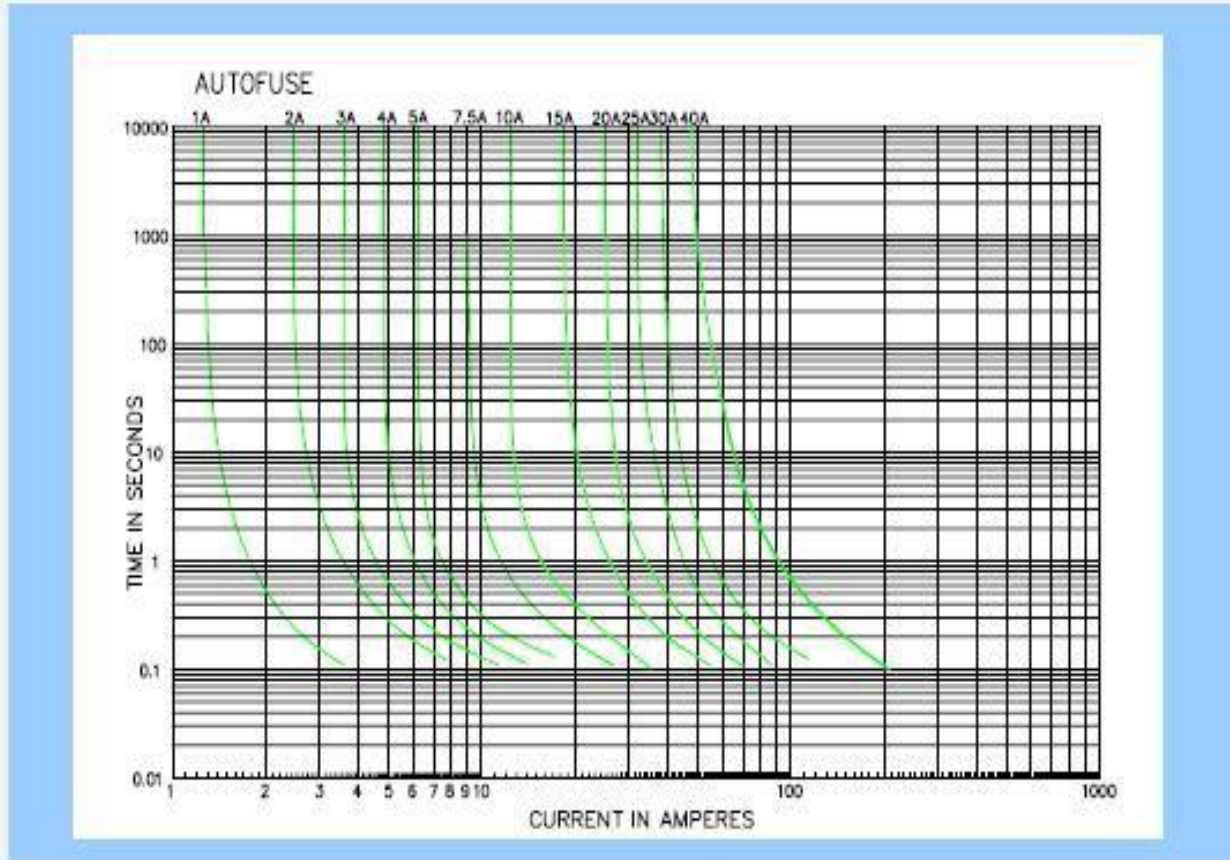
Division	Material
housing	Heat-resting and fire-resistingtranspant resin
Fuse-element and terminal	Zinc alloy

6. Performance-performance of use is in accordancewith TABLE

		Opening tme	
A	Rating	MIN	MAX
3-30	110%	100hrs	No requirement
3-35	135%	0.75s	600s
3-35	200%	0.15s	5s
3-35	350%	0.04s	0.5s
3-35	600%	0.02s	0.1

7.AB10 Diagram

Average Time Current Curve



8.Mark:

Each fuse inserting piece shall be marked with:

- (1) the amount of rated current
- (2) rated voltage;
- (3) the trademark;

9.Conventional packing:

@ minimum package for: 1000PCS

@ a box for 10*1000=10000PCS box specifications: 43*25.5*19CM;